



---

# Series 96000 Slide Control

## Installation Instructions

### **DOR - O - MATIC®**

7350 W. Wilson Ave.  
Harwood Heights, IL 60706

Toll Free: 1-800-543-4635  
In Illinois: 708-867-7400  
Sales FAX: 708-867-0291  
[www.doromatic.com](http://www.doromatic.com)

# INSTALLATION

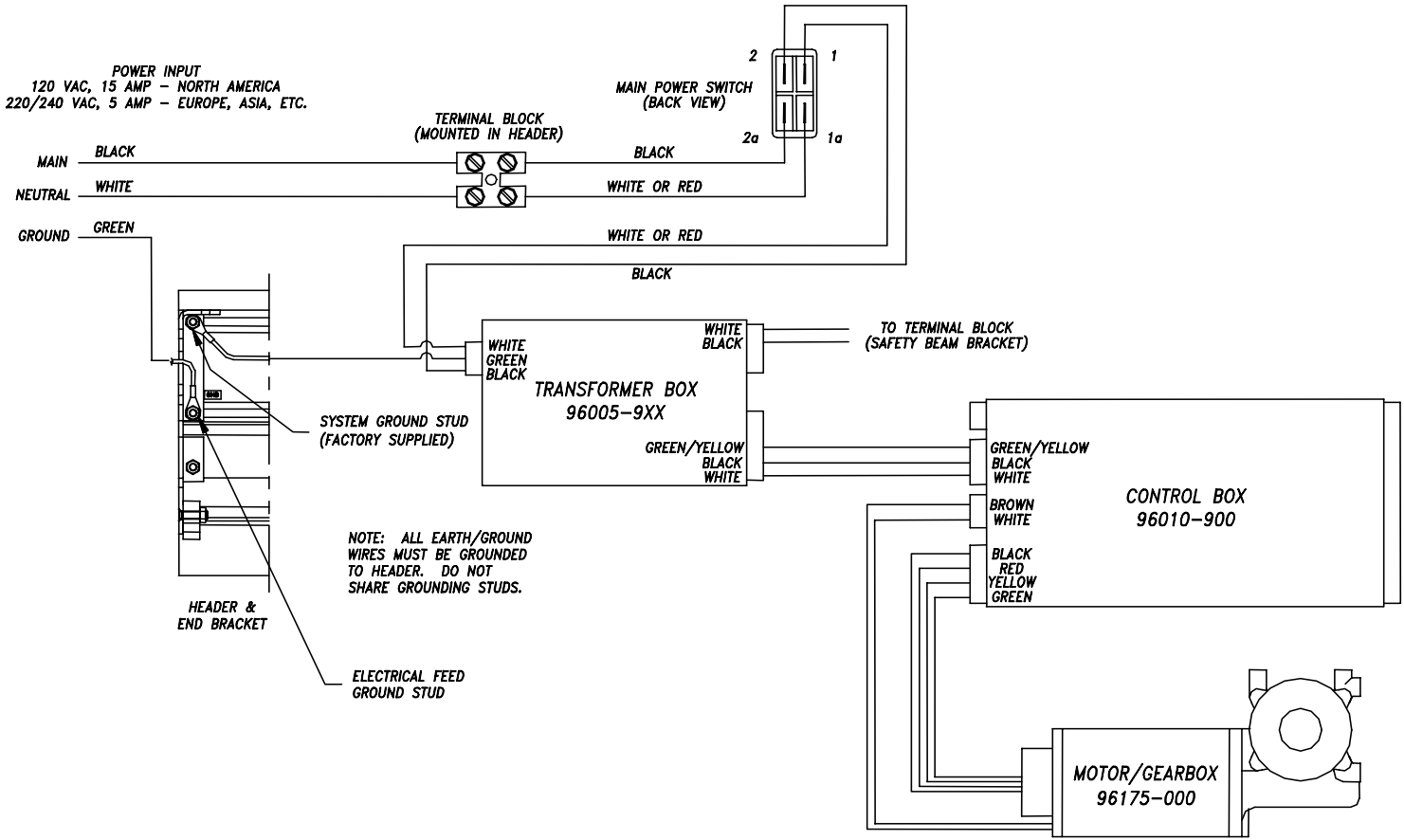
1. Preparation: Refer to Series 96000 Slide Installation Manual (DOM #96000-984) for header preparation instructions.

2. Final Wiring Connections:

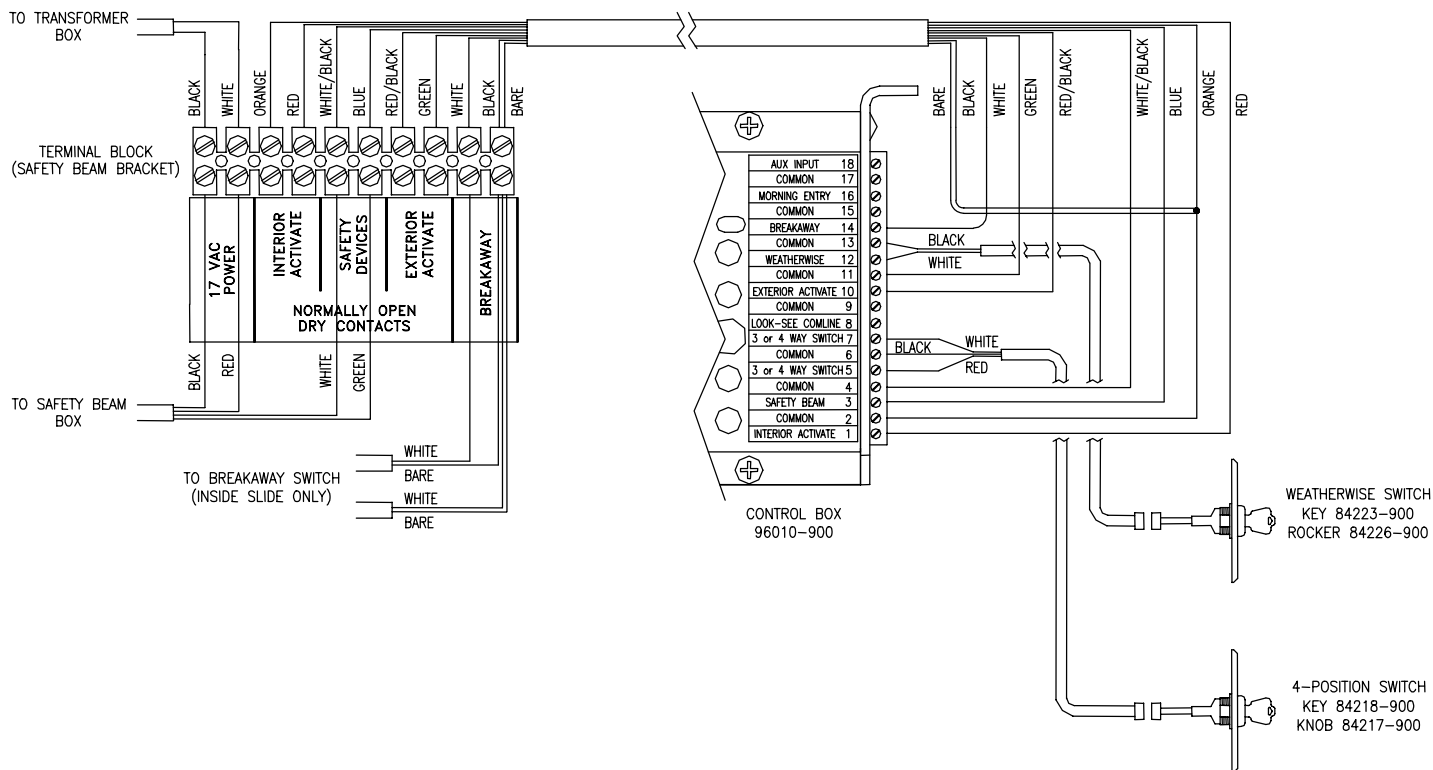
The Series 96000 header comes from the factory "pre-wired" to minimize installation time at the job site. Connect main power to the terminal block at the end of the header (Figure 1). Connect accessories to the terminal block on the safety beam bracket or the appropriate harnesses as needed (Figure 2). Refer to the instruction manual of the accessory for complete wiring details.

- A. Use a 115 volt, 60Hz, fused, 15 amp, 3-wire power supply.
- B. Secure all conductors and connections against physical damage.
- C. Route all wiring away from moving parts, sharp edges and heat sources.
- D. Use copper conductors only.

**NOTE: Always disconnect main power to operator prior to servicing or cleaning.**



**FIGURE 1: POWER WIRING DIAGRAM**



**FIGURE 2: ACCESSORY WIRING DIAGRAM**

3. Operational Check and Adjustments:

*NOTE: Refer to the latest revision of ANSI/BHMA A156.10-1999 Standard for Power Operated Pedestrian Doors for all settings and adjustments.*

A. Sizing:

If the 4-Position Switch is used, be sure it is in the "2-WAY" position before proceeding. Apply power to the system using the main power switch on the header/cover. Give the system an activation signal. The door should open and close once, after which it is ready for normal operation. If the door does not size to the fully open position, first check for binds, then increase the sizing speed by rotating **P6** counter-clockwise just enough to overcome the door weight, etc. **Caution: If the door sizing speed is set too fast, blown fuses and/or a tripped circuit breaker may occur if the doors are activated when manually locked.**

B. Opening Speed:

The opening speed is adjusted by rotating **P2** (CW=SLOWER, CCW=FASTER). It is recommended that the door be operated as slow as is practical for the traffic conditions.

C. Closing Speed:

The closing speed of the door is adjusted by rotating **P4** (CW=SLOWER, CCW=FASTER) and must not exceed 1 ft/sec.

*NOTE: Reset power to the system after setting the opening and closing speeds. This must be done before making any other adjustments.*

D. Back Check Location:

The back check location is selected using **SW2** (0=MINIMUM, F=MAXIMUM).

E. Back Check Speed:

The back check speed is adjusted by rotating **P3** (CW=SLOWER, CCW=FASTER).

F. Latch Location:

The latch location is selected using **SW1** (0=MINIMUM, F=MAXIMUM) and must be at least 2 inches from the fully closed position.

G. Latch Speed:

The latch speed is adjusted by rotating **P5** (CW=SLOWER, CCW=FASTER).

H. Time Delay/Hold Open Time:

The time delay is adjusted by rotating **P1** (CW=LESS DELAY, CCW=MORE DELAY). The adjustment range is 1 to 30 seconds. If a presence sensor is not installed, the time delay must be at least 4 seconds.

I. Normal/Delayed Activation:

The activation is selected with **SW3**. In the normal position, the door opens immediately upon reception of the activation signal. In the delayed position, when the door is fully closed, there is a 1 second delay between reception of the activation signal and the actual opening of the door. This delay allows most electric or magnetic locks time to retract before the door opens.

J. Auto Reverse in Closing:

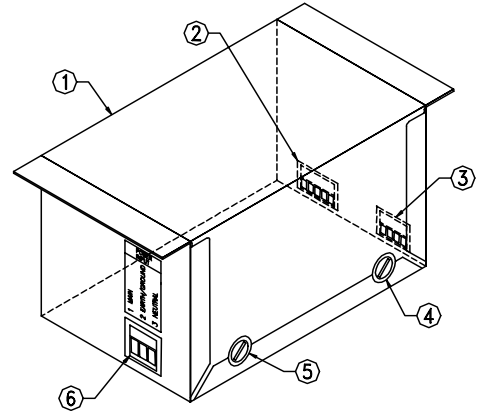
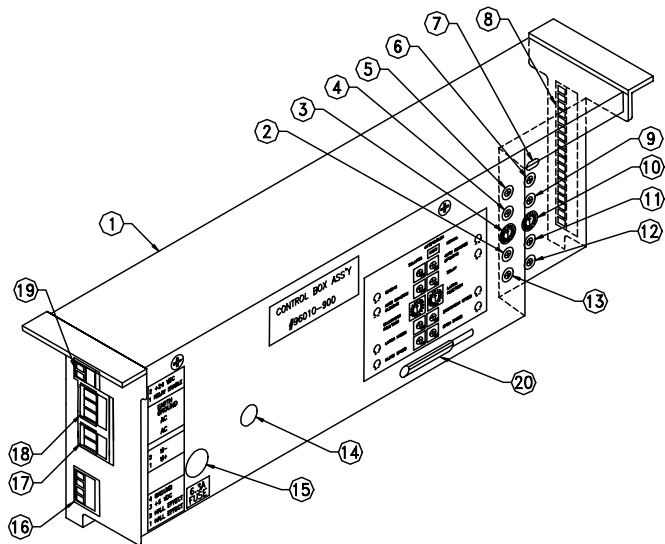
The amount of force required to reverse the door when closing is adjusted by rotating **P7** (CW=MORE FORCE, CCW=LESS FORCE) and must not exceed 30 lbs.

K. Auto Reverse in Opening:

The amount of force required to reverse the door when opening is adjusted by rotating **P8** (CW=MORE FORCE, CCW=LESS FORCE).

L. Reset Power:

After setting all of the adjustments, reset power to the system. Cycle the door to verify all of the settings are correct. If any settings need to be changed, be sure to reset power again. **Power must be reset after any adjustments are made.**



- |  |   |
|--|---|
| 1. SERIES 96000 SLIDE CONTROL BOX #96010-900 | 11. BACKCHECK SPEED ADJUSTMENT (P3)                         |
| 2. LATCH SPEED ADJUSTMENT (P5)               | 12. OPENING SPEED ADJUSTMENT (P2)                           |
| 3. BACKCHECK POSITION SELECTOR (SW2)         | 13. CLOSING SPEED ADJUSTMENT (P4)                           |
| 4. AUTO REVERSE IN CLOSING ADJUSTMENT (P7)   | 14. CIRCUIT BREAKER   |
| 5. SIZING ADJUSTMENT (P6)                    | 15. FUSE, 6.3 AMP (DOM #87083-600)<br>(BUSS #GDCT6.3AL250V) |
| 6. AUTO REVERSE IN OPENING ADJUSTMENT (P8)   | 16. 4-PIN CONNECTOR, HALL EFFECT                            |
| 7. ACTIVATION SWITCH - NORMAL/DELAYED (SW3)  | 17. 2-PIN CONNECTOR, MOTOR                                  |
| 8. 18-PIN CONNECTOR, ACCESSORIES             | 18. 3-PIN CONNECTOR, POWER INPUT                            |
| 9. TIME DELAY ADJUSTMENT (P1)                | 19. 2-PIN CONNECTOR (SMALL), E-LOCK SIGNAL                  |
| 10. LATCH POSITION SELECTOR (SW1)            | 20. ADJUSTMENT TOOL   |

- |  |   |
|--|---|
| 1. SERIES 96000 SLIDE TRANSFORMER BOX # 96005-900    | 4. FUSE, 2.5 AMP (DOM # 96012-600)<br>(LITTELFUSE # 239 02.5) |
| 2. 5-PIN CONNECTOR, POWER TO CONTROL BOX # 96010-900 | 5. FUSE, 2 AMP (DOM # 96011-600)<br>(LITTELFUSE # 239 002)    |
| 3. 4-PIN CONNECTOR, POWER TO ACCESSORIES             | 6. 3-PIN CONNECTOR, POWER INPUT 115V                          |

**FIGURE 3: CONTROL BOX & TRANSFORMER BOX ADJUSTMENTS**

4. Operational Walk-Through Test:

NOTE: It is assumed that during the installation process, any problems would have been found and corrected before this point. However, it is recommended that a complete walk-through test now be performed.

- Give the system an activation signal. The door should open smoothly and silently to the back check point, where it should slow down rapidly and drift into the fully open position without slamming.
- Maintain the activation signal to verify that the door does **NOT** time out and close while being activated.
- If a door safety device is used, step into the door opening. Remain in the door opening making sure that the door does **NOT** close.
- Step out of the door opening. After both the activating area and door opening are clear, the door should time out at the pre-set time delay and begin to close. The door should close quietly and smoothly to the latch point, where it rapidly slows down and drifts into the fully closed position without slamming.

5. Release of the System for Use:

- Remove all tools and installation equipment, and clean any debris from the vicinity of the door.
- Install all safety, traffic control, and instruction decals to the door as required. **THIS IS VERY IMPORTANT!** Failure to do this leaves the installer **LIABLE** for any accident that might occur. **THIS MUST BE DONE!**
- Verbally explain the proper operation of the door system to the owner or to the person in charge.

6. For Doors that are manually/mechanically secured:

- |                       |                          |   |                                       |
|-----------------------|--------------------------|---|---------------------------------------|
| A. Locking:           | 1) Place switch in "OFF" | 2) Allow door to close completely               | 3) Secure door                        |
| B. Unlocking inside:  | 1) Unsecure door         | 2) Place switch in "1-WAY" or "2-WAY"           | 3) Activate door once                 |
| C. Unlocking outside: | 1) Unsecure door         | 2) Activate morning entry or manually open door | 3) Place switch in "1-WAY" or "2-WAY" |

## FEATURES

1. Easy Open: When the door is fully closed and manually opened a few inches, it will automatically open the rest of the way.
2. Adjustable Automatic Reversing: If the door is stalled during the closing cycle, it will automatically stop and reverse to the fully open position. Then the door will close to the point of obstruction and drop to slow speed, looking for the obstruction. This cycle will occur 5 times until the obstruction is removed. After the fifth cycle, the door will stop, requiring an activation signal or manual opening to re-start the system. If the door is stalled during the opening cycle, it will automatically stop and reverse to the fully closed position. The door will remain closed until the next activation signal, at which point it will open normally. **Reversing forces should be adjusted in accordance with all applicable safety codes.**
3. Weatherwise: The weatherwise feature allows the customer to reduce the opening size. When the weatherwise switch is set to "NARROW", the door will only open to about 75% of the normal door opening. (Default = "WIDE" or 100% opening)
4. Safety Beam Shut-Off: When the door is fully closed, the safety beam signal is disregarded so that it cannot be used to open the door. Once the door is activated, the safety beam signal is allowed to re-open the door if either safety beam is interrupted during the closing cycle.
5. 4-Way Operation:  
When the 4-Position Switch is set to:  
"OFF", interior and exterior activation will not open the door. The morning entry switch will open the door.  
"1-WAY", only interior activation will open the door. Exterior activation will not open a closed door but will re-open a door in the closing cycle.  
"2-WAY", interior and exterior activation will open the door.  
"HOLD OPEN", the door will remain open.

If the 4-Position Switch is not used, Default = "1-WAY".

## DO'S AND DON'TS

1. Do **NOT** try to use this operator on large, heavy doors without checking with the factory first.
2. Do **NOT** connect any remote activating device to the door unless it is located within the "line of sight" of the door.
3. Do **NOT** attempt to use a fuse larger than specified.
4. Do **NOT** attempt to modify the factory wiring or connect any wiring into an existing electrical circuit or any other electrical device.
5. Do make certain that the operator is connected to a dedicated 115 volt circuit from the main circuit breaker panel.
6. Do make certain that the operator is properly grounded with a separate green wire.
7. Do make certain that all connections are proper and secure before turning the power on.
8. Do make certain that all wires are properly dressed and secured to prevent any interference.
9. Do make certain that all safety labels and instruction decals relating to door operation are properly applied to the door before leaving the job.
10. Do verbally instruct the owner or person in charge of the proper operation of the door.
11. Do disconnect main power to the operator prior to servicing or cleaning.
12. Do instruct the owner or person in charge of his responsibility of inspecting the door for the following:
  - A. Occasional damage
  - B. Developing problems
  - C. Minor preventative maintenance
  - D. Who and where to call for service when required

If the door package operates improperly, turn off main power. Re-adjust all potentiometers to the middle of their range and turn main power on. Activate the operator to allow the door to re-size. Repeat adjustment procedure as required.