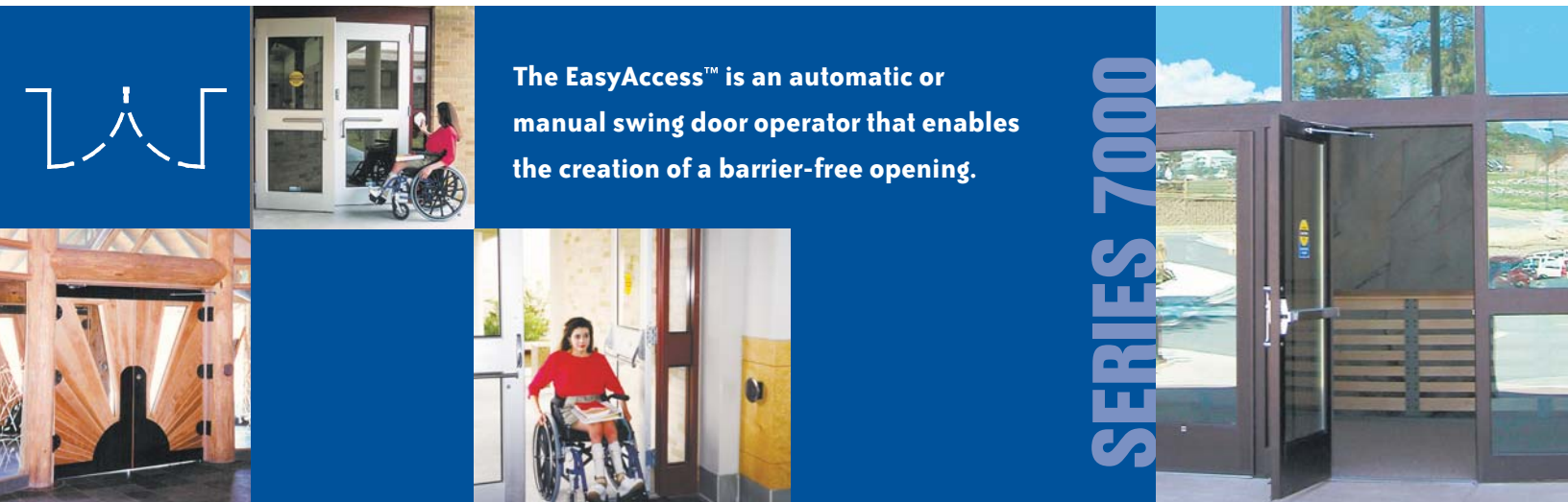


EasyAccess™



SWING DOOR OPERATOR



The EasyAccess™ is an automatic or manual swing door operator that enables the creation of a barrier-free opening.

Innovative Features and Economical Performance

This low-energy, slow-opening swing door operator is easily installed on new and existing swing doors for ADA compliance and user convenience. It is designed for automatic or manual operation and meets ANSI A156.19 requirements when properly adjusted. The **EasyAccess™** is also available in complete door packages where the operator is concealed in the door header. All swing door panels feature Horton's premium corner block construction for years of trouble free operation. Horton's swing door systems break out for emergency egress.

Standard features of the control provide safe and efficient operation. When the door is obstructed in the opening cycle, opening force is immediately reduced, if obstructed in the closing cycle the door automatically reopens. Horton's Push-N-Go™ feature activates the operator if the door is lightly pushed. The door can be manually operated, with power on or off, without damage to the operator.

Horton Automatics has the largest factory trained and certified distribution team in the industry to support the installation and servicing of your swing door entrances.

Standard Features:

- ▶ Adjustable opening and closing speeds
- ▶ Adjustable time delay for closing (2–30 seconds)
- ▶ Push-N-Go™ – activation when pushed
- ▶ Obstruction sensing – Reduces opening force if door meets obstruction
- ▶ SoftTouch™ – Reopens the door if stopped during closing cycle
- ▶ Automatic or manual operation
- ▶ Low-energy & barrier-free entry
- ▶ Complies with ANSI A117, A156.19 and Americans with Disabilities Act of 1990

Specifier Options:

- ▶ Finish (Anodized aluminum, paint, metal clad)
- ▶ Configuration
- ▶ Overall dimensions
- ▶ Sensor, safety and security packages

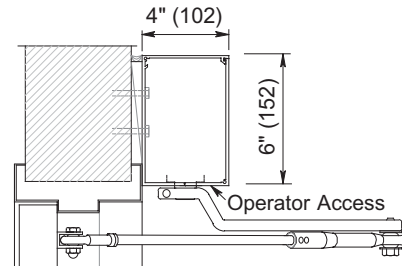


EasyAccess™

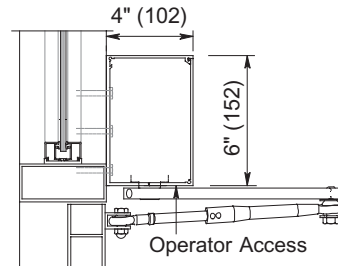
operator is mounted and concealed in an anodized aluminum cover

(standard finishes clear and dark bronze). It is powered open with a DC

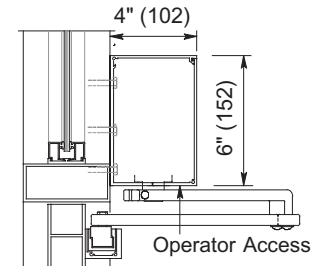
motor working through six reduction gears and closed by spring force.



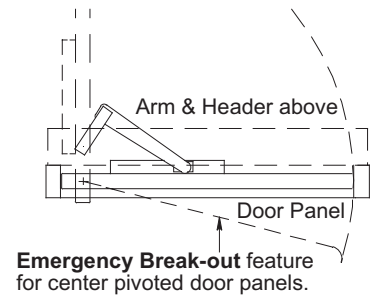
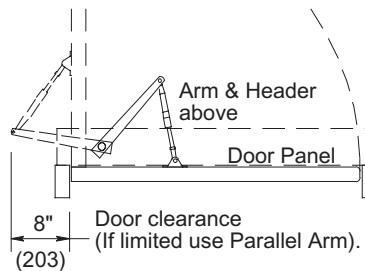
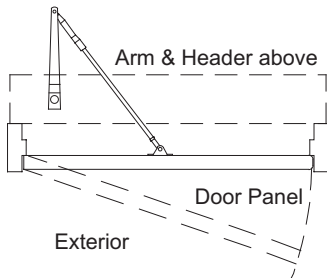
Outwing Arm on Butt-hung Door



Standard Inswing Arm on Off-set Door

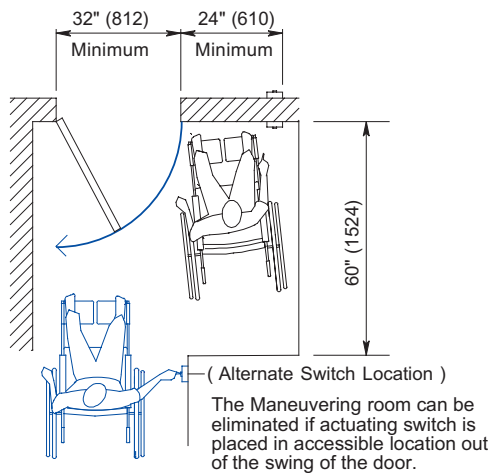


Parallel Inswing Arm on Center Pivoted Door

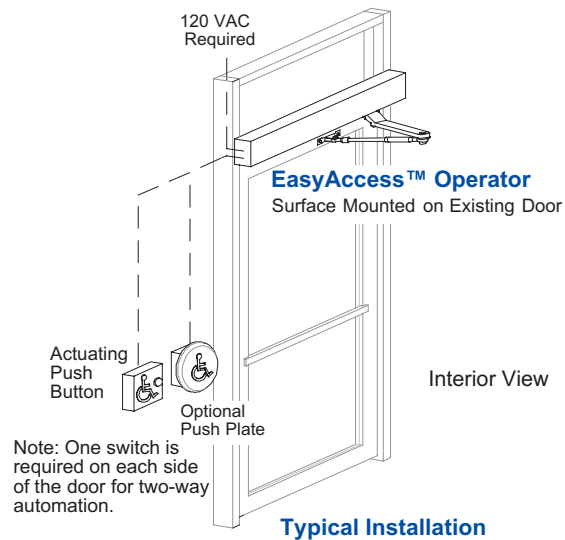


*ANSI A156.19 defines low-energy operators,

APPLICATIONS



ADA Floor Space Requirements



Typical Installation

To meet ANSI A156.19* the force required to stop the door in the opening or closing cycle must be adjusted to less than 15 pounds of force, measured 1" from the lock stile of the door.



4242 Baldwin Boulevard
Corpus Christi,
Texas, U.S.A. 78405-3399
Tel: 800-531-3111, 361-888-5591
Fax: 800-531-3108, 361-888-6510
www.hortondoors.com

Horton Automatics reserves the right to alter its product and specifications without notice.

Horton Automatics, Ltd.
Unit A, Hortonwood 31
Telford, Shropshire, England TF1-7YZ
Tel: 01952 670169, Fax: 01952 670181
International Tel: ++44-1952-670169
International Fax: ++44-1952-670181



Form B501, Rev. 6/04
© 1987 Horton Automatics
Printed in U.S.A.